

Solenoid valves

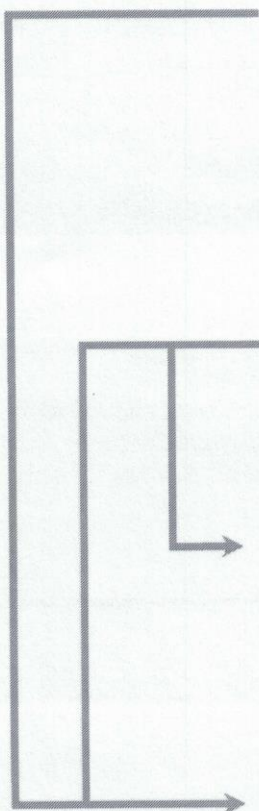
up to 800 bar and 300 l/min.

as 2/2 way valve

- can be mounted in line in pipe work or flange mounted.
- choice of hose connection sizes.
- non corroding water bearing components.
- negligible pressure loss, leakage build up during switching can be piped away (1/4" BSP, female).
- identical inlet and outlet threads (M 33 x 2, female).
- main valve closed by spring from „P“ to „A“ without water pressure.

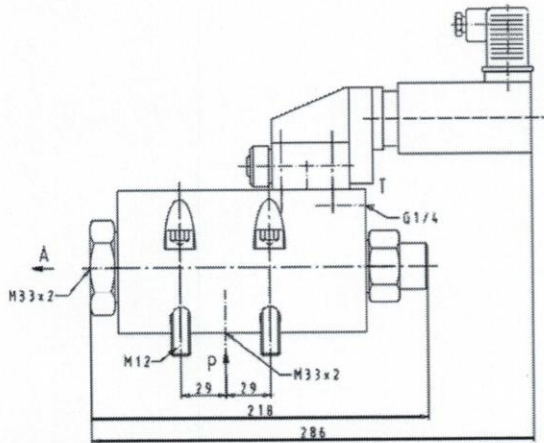
Two Versions:

1. With electro magnetic pilot (relay) valve
(no air pressure necessary but not for use in Ex zones)
2. With electro pneumatic pilot (relay) valve;
1/4" BSP (female); connection, 3 to 6 bar air pressure necessary
(suitable for various solenoid valves, including for use in Ex zones)

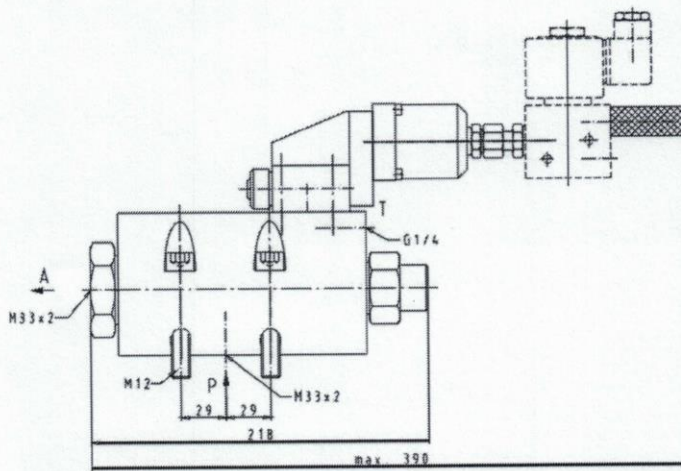
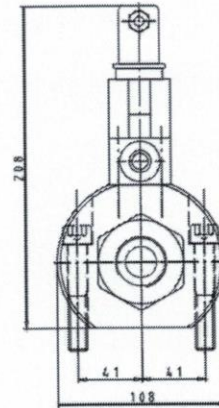


Basic solenoid valve	Code no.
Electro magnetic design, 24 V, not Ex zones (normally closed main valve)	00.05875.0063
Electro magnetic design, 24 V, not Ex zones (normally open main valve)	00.05875.0065
Electro magnetic design, 230 V, not Ex zones (normally open main valve)	00.05875.0066
Electro pneumatic design without solenoid valve (pressure loss closed main valve)	00.05875.0064
3/2 Way Solenoid valve 5 mm^{*)}	Code no.
Non Ex zone design, 24 V	04.05875.0107
E Ex em design, 24 V, MS (to ATEX)	04.05875.0183
E Ex em design, 24 V, stainless steel (to ATEX)	04.05875.0171
E Ex ia, 24 V, design	04.05875.0167
Adapter with gasket ring	Code no.
M 24 x 1,5 DKO-S	08.23200.9001
M 36 x 2 DKO-S	08.25200.9001
M 42 x 2 DKO-S	08.26200.9001
Separate gasket ring	04.00742.0057

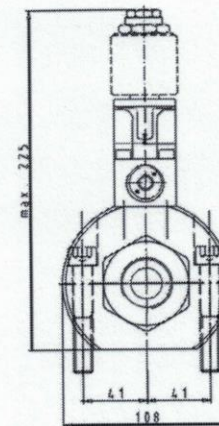
Solenoid valves up to 800 bar and 300 l/min. as 2/2 way valve



00 05875 0063, 0065, 0066



00 05875 0064



Description see page 11.Q.1

